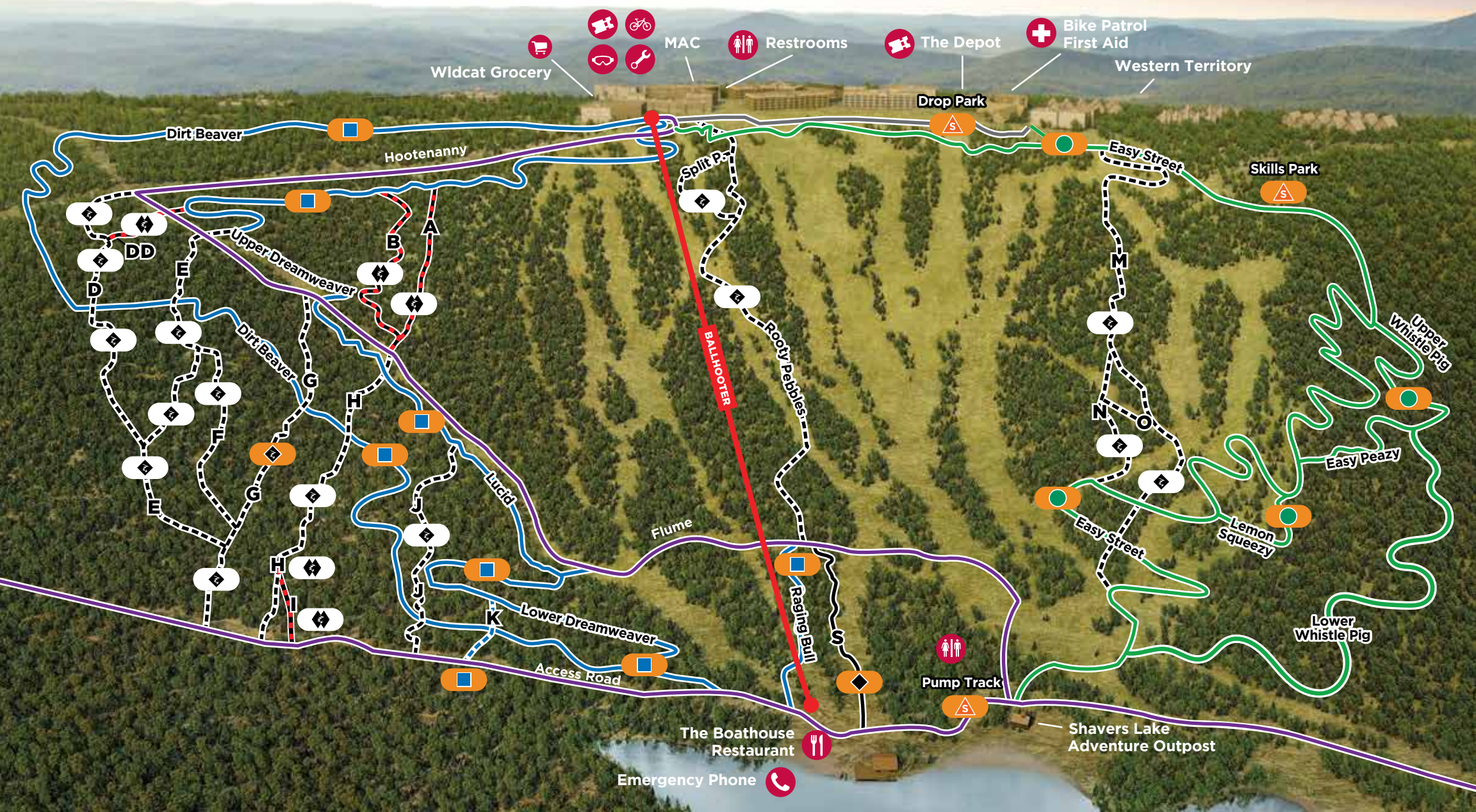


BASIN AREA



BIKE LESSONS

Whatever your skill level, there's always something new to learn. Sign up for a group or private lesson with one of our highly skilled Snowshoe Bike Park coaches. They know this mountain like the back of their hands and can tailor an experience to meet your riding goals and comfort level. Whether you're an experienced XC rider, a seasoned weekend warrior or you're brand new to the park, our coaches are trained to build your confidence and make you a better rider.

Mountain Biking 101

If you're new to downhill bike parks, or just need a refresher, this course is just for you. Our certified coaches will take you on an hour and a half adventure to show you all the skills you need to build your confidence in the park.

Specialty Skills Clinics

Our Skill Clinics are perfect for riders looking to master a specific skill on the bike whether its jumps, drops, or berms and corners. Join like-minded riders and one of our expert coaches for one hour to focus on a specific skill that will take your riding to the next level.

For all of the details on lessons, clinics and tours visit snowshoemtn.com



IMBA RIDE CENTER

The International Mountain Bicycling Association (IMBA) is the go-to organization for creating, enhancing, and protecting great places to ride mountain bikes. To be designated an IMBA Ride Center, a region must feature extensive trail networks, masterfully designed for mountain bikers of every skill level. From backcountry adventures to shuttle-served gravity trails, and from expert-only trails to family-friendly riding, mountain bikers can expect the best the sport has to offer. The Snowshoe Highlands Ride Center has been elevated to a Silver Level thanks to strong community support and collaboration.

Learn more at ridesnowshoehighlands.com

SEASON DATES

MAY 21 - JUNE 21
Open Thurs - Sun

JUNE 25 - SEPTEMBER 7
Open Daily

SEPTEMBER 10 - OCTOBER 11
Open Thurs - Sun

HOURS

Ballhooter Lift
Daily: 10am - 6pm*

Western Territory Lift
Thurs - Sun: 10am - 5pm*

Mon-Wed will operate as a Limited Park with Basin Trails open. Thur-Sun will operate as a Full Park with the Basin and Western Territory trails open. Western Territory will be open on holiday Mondays. The Basin trails will be closed for GNCC, June 26-28 2026. Hours are subject to change.

EVENTS



May 21 | Bike Park Opening Day

June 12-14 | Downhill Southeast

September 6 | WV Enduro Series Finals

October 11 | Bike Park Closing Day

Check out our Hotdogs & Handlebars events! This series is all about progression and community, bringing together skills clinics, races, and group rides for riders of all levels.

View full event schedule at snowshoemtn.com



BIKE RENTALS

Advanced reservations are highly encouraged. Inventory is limited and availability is not guaranteed.

Book bike rentals in advance at snowshoemtn.com.

For rental pick up or to inquire about day-of rentals, go to The Mountain Adventure Center (The MAC).

- BIKE PARK LIFT
- ACCESS ROAD
- WALKING PATH
- Bike Rentals
- Restrooms
- Emergency Phone
- Ticket Sales
- Dining
- Bike Patrol First Aid
- Repairs
- Grocery
- Lessons

<p>FREERIDE TRAILS</p> <ul style="list-style-type: none"> EASIEST INTERMEDIATE ADVANCED EXPERT ONLY 	<p>TECHNICAL TRAILS</p> <ul style="list-style-type: none"> EASIEST INTERMEDIATE ADVANCED EXPERT ONLY
--	---

TECHNICAL TRAILS: Technical Trails are relatively narrow and contain features and characteristics found naturally occurring across the terrain. Technical Trails mostly contain roots, rocks, logs, water crossings, jumps, drops, and other natural characteristics and obstacles found in the natural environment, but may also contain man-made obstacles, features, and bridges created from dirt, wood, or other materials. These trails are mostly hand built and left in their natural state.

FREERIDE TRAILS: Freeride Trails are relatively wider than Technical Trails, containing constructed enhanced/modified terrain, obstacles, and features such as jumps, berms, banks, bridges, drops, etc. created from dirt, wood or other materials. Freeride Trails are mostly machine built but may have some sections that are hand built. Freeride Trails may also contain features and characteristics found in the natural environment.

SKILL DEVELOPMENT AREAS: Skill Areas are specifically designed to provide riders the opportunity to learn and develop new skills away from the trail environment. Skill Areas contain man-made and natural features and obstacles created from dirt, wood, or other materials. Features and obstacles in Skill Areas vary in size and difficulty. Remember, it is your responsibility to inspect features and obstacles before attempting.

MOUNTAIN BIKING IS A DANGEROUS AND HAZARDOUS ACTIVITY WHICH CAN RESULT IN SERIOUS INJURY OR DEATH. Mountain biking is done on partially improved and unimproved trails and roads, as well as on naturally rugged terrain. Mountain biking involves risks, including, but not limited to, steep slopes, rocks of various sizes, trees, roots, tree stumps, cliffs, rock drops, holes and potholes, depressions, streams and creeks, steep declines and inclines tight switchbacks, dirt features and other constructed features such as bridges, ramps, ladders, bumps, berms, jumps and drops, wallrides, elevated stunts, "teeter-totters", raised platforms, uneven and/or slippery trail conditions, varying slopes, variations in terrain, forest growth, loose gravel and dirt, wet surfaces, downed timber, debris, collisions, other riders, hikers and pedestrians, heavy equipment and vehicles. Trail conditions and features may change quickly due to weather, use and other factors.

- EASIEST:** Moderate descents with obstacles such as rocks, gravel, roots, bridges, and water ditches. Must have basic bike-riding skills.
- INTERMEDIATE:** Challenging riding with steep slopes and/or obstacles, possibly on narrow or elevated features with poor traction. Trails may contain bridges, drops, and jumps. Requires previous off-road riding experience.
- ADVANCED:** These trails have a mixture of long, steep descents, loose trail surfaces, rocks, drops, numerous natural and man-made obstacles including jumps, ramps, elevated features and other various terrain.
- EXPERT ONLY:** Without exception, expert mountain bikers should be the only riders on these trails. Some of the elements you will encounter will be large, natural and man-made jumps, elevated narrow features, mandatory drops, long and steep terrain on loose or rock surfaces.

PUMP TRACK: A BMX style loop of berms and rollers. This track allows riders of all skill levels to practice their ability to maintain and create speed.

SKILLS PARK: The perfect spot for beginners to be introduced to Bike Park features. Located on the left side of Easy Street as depicted on the map.

DROP PARK: These small drops are located on Skidder, near the Patrol building. They provide a great place for beginners to become comfortable riding drops.



2026 TRAIL MAP

Snowshoe Mountain, West Virginia
 snowshoemtn.com | 877.441.4386



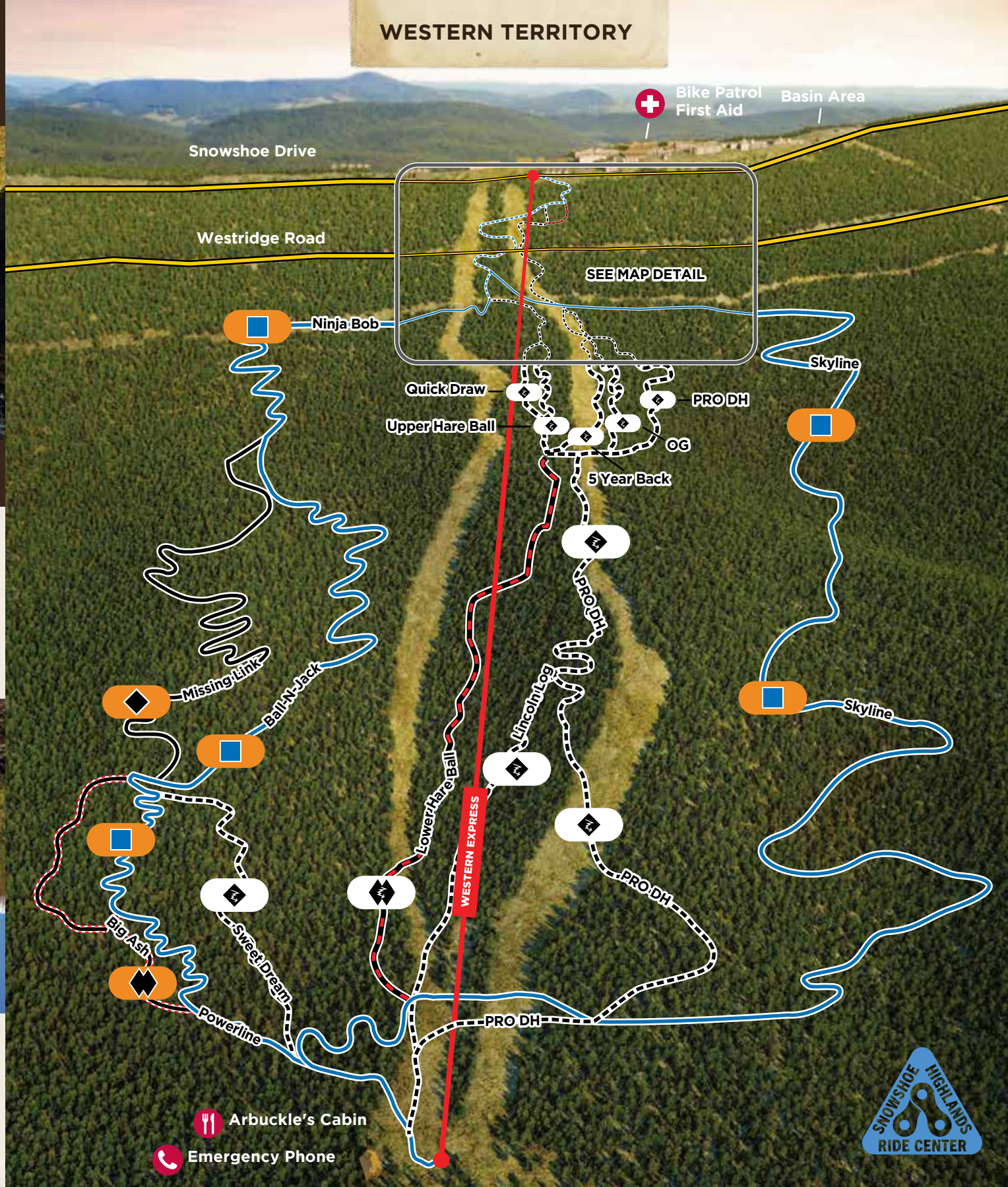
We'll see you on the trail!

With one of the largest trail systems in the East, the "Shoe" is something like a paradise for mountain bikers. Almost Heaven you might say. From first timers to world cup racers, this mountain has the right trail for every rider. Fun and flow? We've got that. Steep and technical? You better believe it. Explore more than 40 trails spread across 2 unique areas, the Basin and the legendary Western Territory, and accessed by 2 high-speed lifts.

So you've got an appetite for some mountain biking? Well you're in luck - the Snowshoe Bike Park is an all-you-can-share buffet of delicious rocks, roots, berms and jumps. Come hungry.

WORLD SERIES TENACITY APPALACHIAN METTLE MEETS

WESTERN TERRITORY



BIKE PARK LIFT	PAVED PUBLIC ROAD
GAP JUMP: Indicates a required, mandatory jump distance to clear an obstacle.	FEATURE AHEAD: Indicates an upcoming man-made wooden technical feature that may be elevated.
DROP: Indicates a drop requiring both tires to leave the ground to successfully clear.	TRAILS MERGE: Indicates an upcoming merging of two trails.
JUMP: Indicates a dirt jump or feature intended to lift the bike off the ground.	TRAILS CROSSING: Indicates an upcoming crossing of two trails.

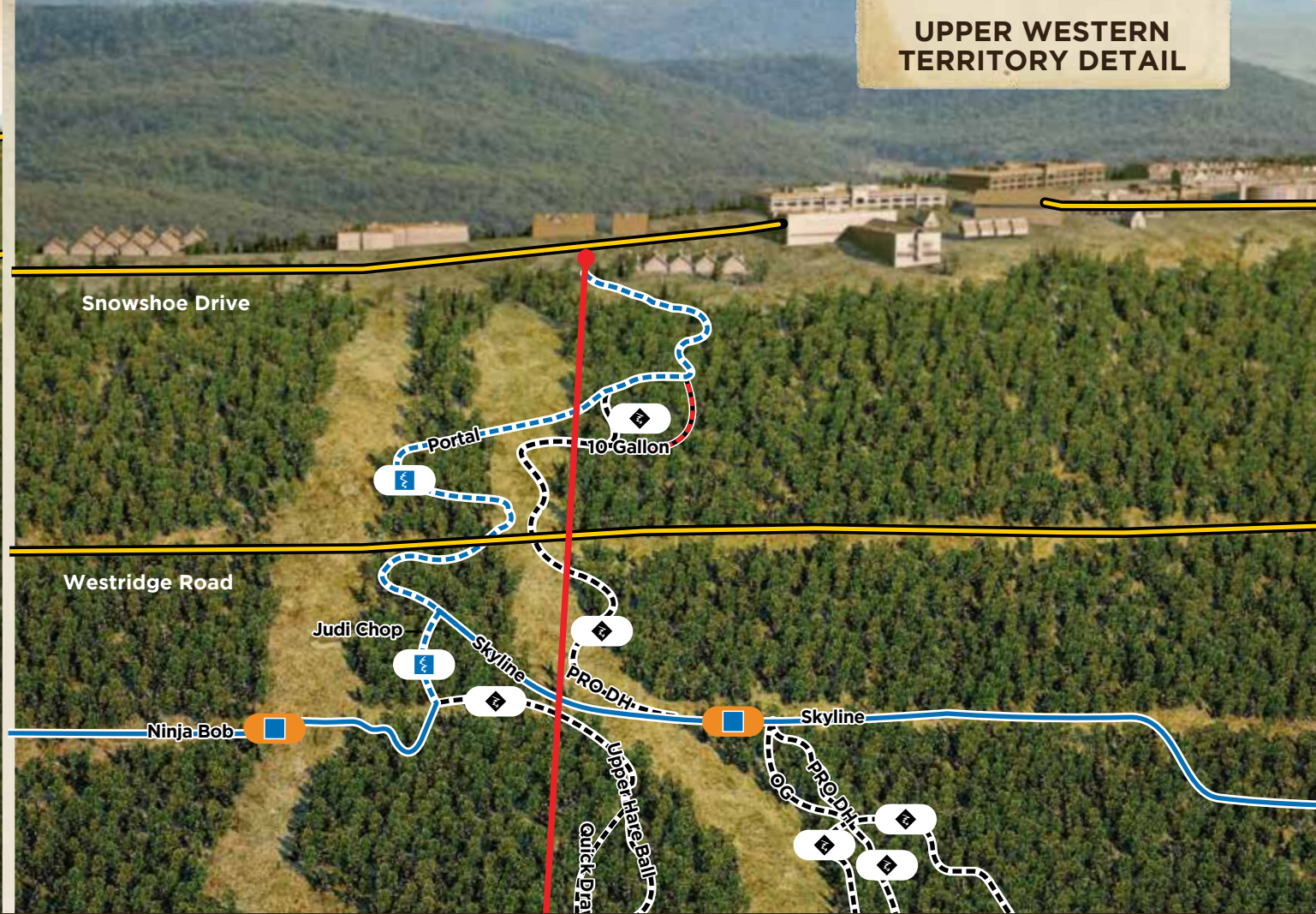
Gear Up

Helmets are mandatory for all riders but we strongly recommend additional protective gear. Keep water on hand throughout the day. Equipment, including spare parts, helmets, and body armor, are available in the MAC. We've got some great techs too - in case you want us to look over your bike before you start riding or need a tune up during the day.

Ride Smart

PRE-RIDE Warm up the brain and body and inspect the trail at low speed.	RE-RIDE Lap the trail a few times and get to know the flow of the features.	FREE-RIDE Start small and work your way up to faster speeds and larger features.
---	---	--

UPPER WESTERN TERRITORY DETAIL



HEADS UP

The Snowshoe Bike Park is intended for downhill mountain biking and consists of trails that contain naturally rugged terrain, and man-made and natural features. A pedal bike containing a minimum of two wheels, two functional brakes, and two off road tires is required. A downhill-specific mountain bike is recommended when riding the Snowshoe Bike Park.

All riders must possess a valid ticket or pass to enter the Bike Park. Before riding, always inspect your equipment or have it checked by a qualified bike mechanic. Helmets are required in the bike park and on Snowshoe Mountain Resort property. Additional personal protective equipment such as but not limited to a full face helmet and protective padding is recommended.

BE AWARE

- NOTICE:** There are no top-to-bottom "Easiest" trails on the Western Territory.
- All trails within the Bike Park are for downhill biking only. No uphill traffic permitted.
 - Anyone who is under the influence of alcohol and/or drugs is prohibited from participating in the Snowshoe Bike Park.
 - Bike Park participants must execute a release of liability prior to use.
 - Degree of difficulty rating and symbols are relative to the Snowshoe Bike Park only.
 - Do not use trails or features if you lack sufficient ability and/or experience. You may cautiously walk your bike if you feel you are on a trail or feature beyond your skill level.
 - Trail features vary in size and difficulty.
 - Trail conditions can change rapidly due to weather, use, and other factors.
 - Not all trails are checked or cleared on a continual basis. Report obstacles or hazards to Patrol or any Snowshoe employee.
 - You may encounter authorized and unauthorized motor vehicles, trail work crews, pedestrians, emergency services personnel, down trees and limbs, and construction areas; it is your responsibility to yield.
 - Never approach or feed wildlife. Do not get closer than 100 yards. Confrontations are best handled by staying calm and backing away slowly. Don't make wildlife feel threatened.



MOUNTAIN BIKER'S RESPONSIBILITY CODE

Mountain biking involves the risk of serious injury or crash. Your knowledge, decisions and actions contribute to your safety and that of others.

ALWAYS:

- STAY IN CONTROL**
You are responsible for avoiding objects and people.
- KNOW YOUR LIMITS**
Ride within your ability. Start small and work your way up.
- PROTECT YOURSELF**
Use an appropriate bike, helmet, and protective equipment.
- INSPECT AND MAINTAIN YOUR EQUIPMENT**
Know your components and their operation prior to riding.
- BE LIFT SMART**
Know how to load, ride and unload safely. Ask if you need help.
- INSPECT THE TRAILS AND FEATURES**
Conditions change constantly; plan and adjust your riding accordingly.
- OBEY SIGNS AND WARNINGS**
Stay on marked trails only. Keep off closed trails and features. Ride in the direction indicated.
- BE VISIBLE**
Do not stop where you obstruct a trail, feature, landing or are not visible.
- LOOK OUT FOR OTHERS**
Look both ways and yield when entering or crossing a road or trail. When overtaking, use caution and yield to those ahead.
- COOPERATE**
If involved in or witness to an incident, identify yourself to staff.

KNOW AND FOLLOW THE CODE. IT IS YOUR RESPONSIBILITY

ADDITIONAL INFORMATION

- Trails or lifts may be temporarily closed due to weather, special events, construction, maintenance, or trail conditions. Check the daily trail report at the Mountain Adventure Center or The Depot for Bike Park and lift information.
- In the event of a weather hold, the lifts will stop and shuttle buses will pick up riders at Arbuckle's Cabin (Western Territory) and The Boathouse (Basin Area).
- The use of personal drones is strictly prohibited. The use of commercial drones is only permitted with the express written consent of Snowshoe Mountain.
- Help us maintain our mountain environment. Do not litter, nor build additional features. Only utilize marked trails.
- Failure to obey signs, warnings and/or resort rules and policies may result in loss of ticket or pass.

IN CASE OF ACCIDENT

Call 304.572.5400, pick up an emergency phone or report an accident to any Snowshoe employee. Please provide nature of the injury, trail name and approximate location of accident using landmarks.

Special Thanks to Our Sponsors

